

ALViS

Alarm Visualization System

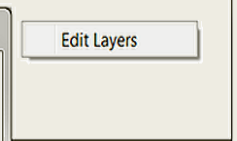
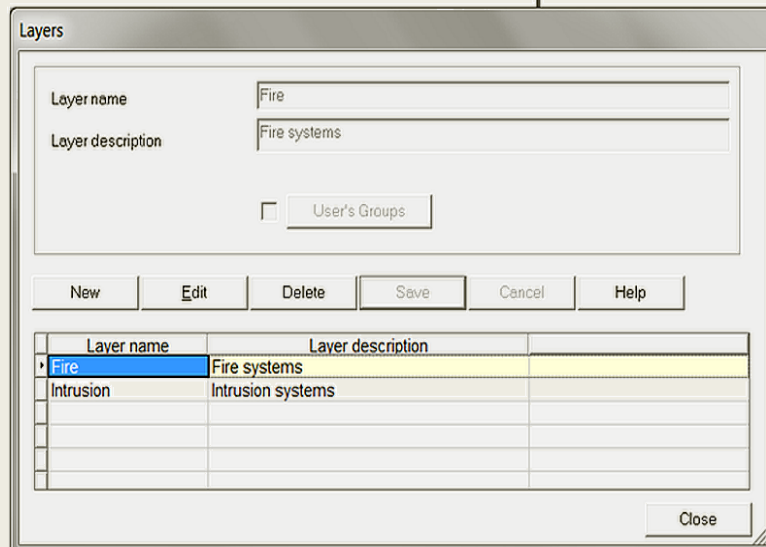
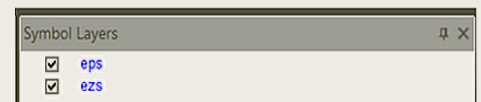
Version 3.7 New Features

ALViS - Symbol Layers

- Any number of layers can be defined and each symbol in the application may be included into one layer
- Layers are global for the entire application and can be switched on \ off in " Symbol Layers Window" or by ALViS scripting language commands
- Turn off layer means that all symbols belonging to it as well as events (alarms, log messages, ...) of these symbols are invisible
- Each layer can be assigned to user groups who have a right to see the corresponding layer and turn it on \ off
- Right-click in the **Symbol Layers** window in development mode will open the **Edit Layers** menu with the dialog box titled **Layers**. Standard way there is possible to add, remove and edit existing layers. It is also possible to tie showing layers according to user groups

WE ARE ON THE TOP

- feature
- innovation
- support
- price



AVMS

Alarm Visualization System

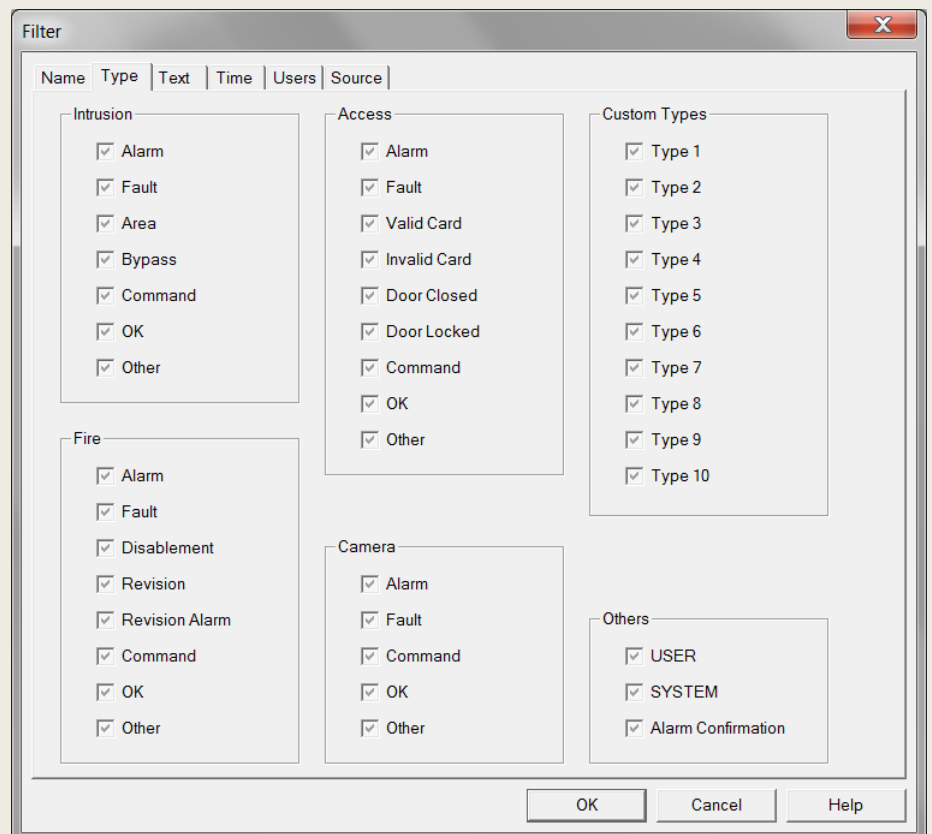
Version 3.7 New Features

WE ARE ON THE TOP

- feature
- innovation
- support
- price

Predefined Protocol Messages

- New 30 fixed-defined types of log messages are included, 10 previous user-defined types remains
- 7 types for **security control panels** elements, 8 types for **fire panels** elements, 9 types for **access control systems**, 5 types for **camera systems** and 1 type to **confirm the alarm**
- These types can be allocated to the protocol message in the dialog for defining the protocol messages
- Consequently you can filter log messages according to these types in the log window



- Each type of protocol message is corresponding to the icon in the **protocol.bmp** file that appears in front of the message in the protocol window



AIVIS

Alarm Visualization System

Version 3.7 New Features

WE ARE ON THE TOP

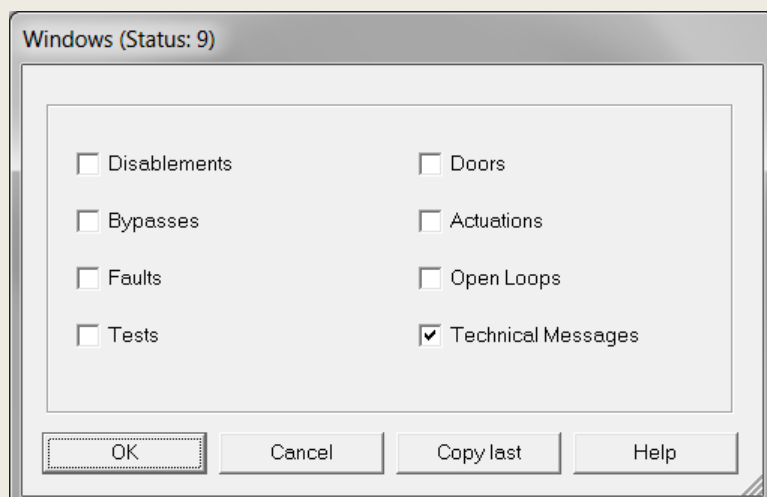
- **feature**
- **innovation**
- **support**
- **price**

AIViS SNMP Trap Server

- AIViS supports technology of sending SNMP traps using the scripting language function SendSnmpTrap (..).
- A prerequisite is the use of standard MS Windows components "SNMP Service" and "SNMP extension agent" (AlvisSnmpAgent.dll). Both of these services must be installed and configured
- SNMP Trap Server technology allows according to "snmp standards" send from the program AIViS the events based trap to the configured clients

New Predefined User Windows

The eight most frequently used user windows are predefined and can be easily selected. The predefined windows are: Disconnections (*disablements*), Bridging (*bypasses*), Non-systemic faults (*faults*), Revisions (*tests*), Doors (*doors*), Actuations (*actuations*), Open Loops (*openLoops*) and Technical Reports (*technicalMessages*) – they can be used in a output expression script driven by events



ALVIS

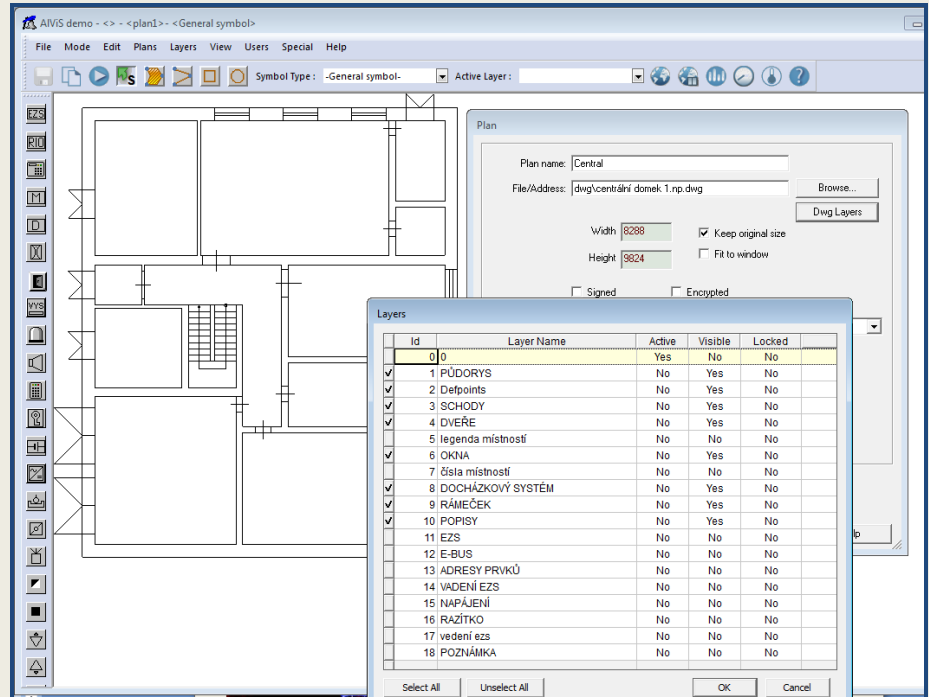
Alarm Visualization System

Version 3.7 New Features

WE ARE ON THE TOP

- feature
- innovation
- support
- price

Switching display of individual layers of DWG plans



ALViS WEB 3.7 SERVER new features

- **Layers support** - Plans can contain symbols organized into layers which could be turned on/off independently for every user, when particular layer is turned off, all related information including alarms, protocol messages, faults, etc.; are also hidden
- **Symbol detail window** - Context menu of each symbol contains menu item which opens dialog containing information on symbol parameters
- **Quick filtering** of symbol messages - Context menu of each symbol contains "Filter" menu item which can be used to apply quick-filter to show only messages related to the particular symbol
- **Improved user interface** - Standard windows (plans, alarms, faults, devices) are grouped in a dedicated panel, other custom web user windows are grouped in another dedicated panel
- **Online users tracking** - New dedicated window containing list of online users and their client station IP addresses, window visibility can be configured via ALViS Web configuration application, protocolling of login/logout events