

ALVIS

Alarm Visualization System

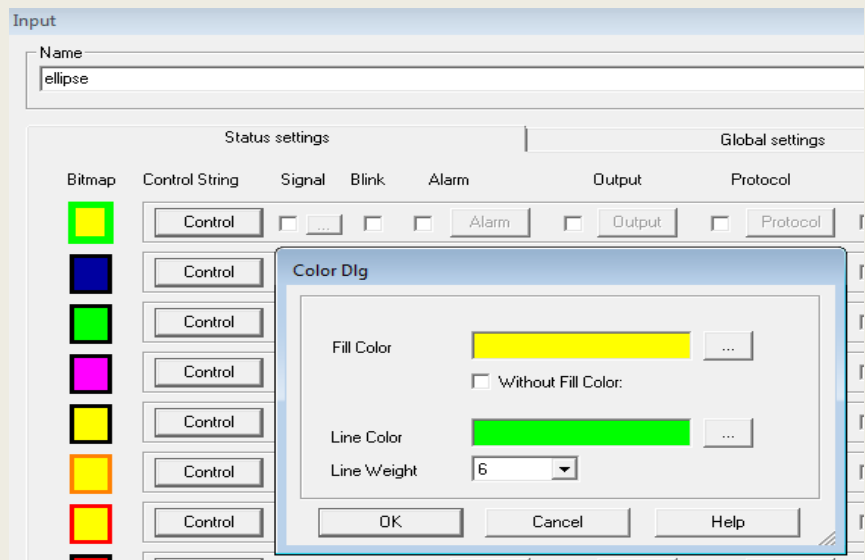
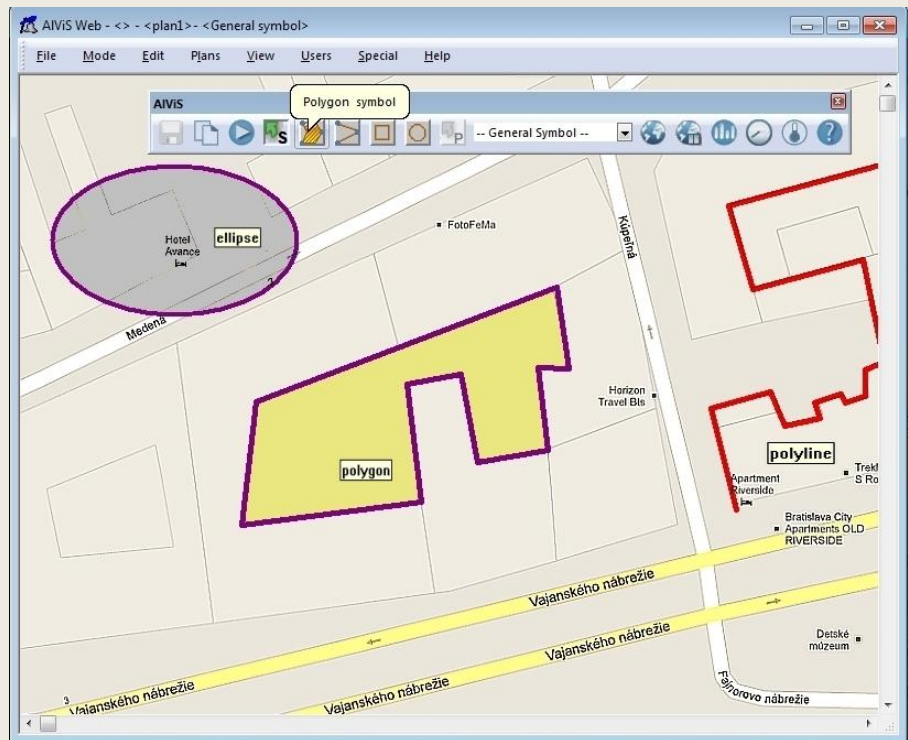
Version 3.6 New Features

WE ARE ON THE TOP

- **feature**
- **innovation**
- **support**
- **price**

Polygon, Polyline, Ellipse ...

- New graphics for ALViS symbols
- Behaves as a general symbols or templates
- Color and line thickness setting
- Enables to indicate the status of an area



ALVIS

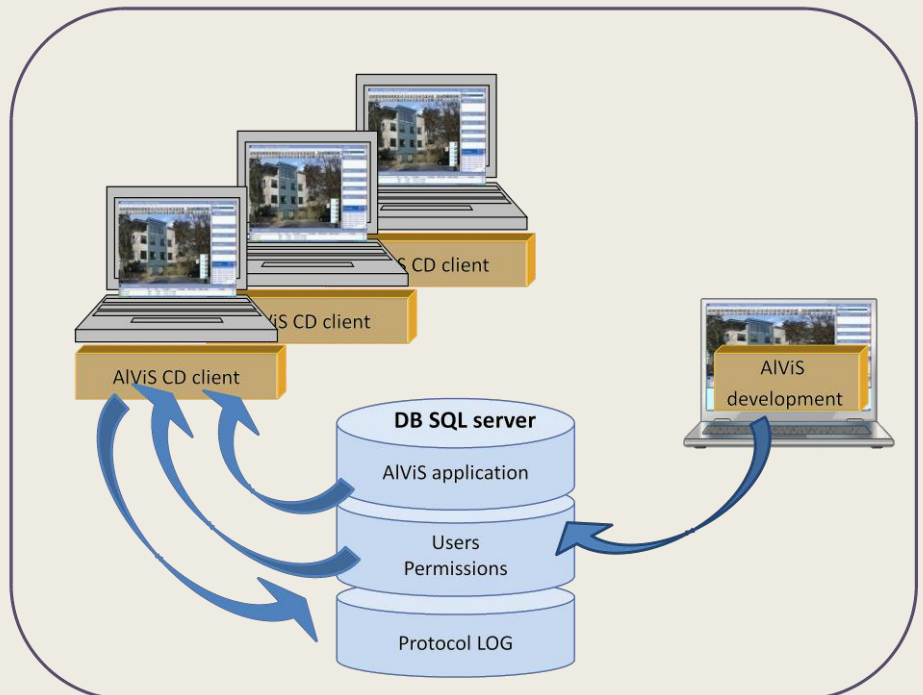
Alarm Visualization System

Version 3.6 New Features

WE ARE ON THE TOP

- feature
- innovation
- support
- price

ALViS CD – Central Database Installation



- ALVIS Version 3.6 enables to configure the system with the central SQL Database server which includes the ALVIS application (i.e. a set of graphical plans, symbols, there functions and configuration parameters). Moreover Database includes the common events protocol log tables.
- This installation provides that all ALVIS workstations contain one common and consistent application and one events log.
- One ALVIS Workstation could be detached to be development console to operate all the application changes, test them and save into the central database where all the other workstations are invited to import and upgrade the new applications.

AVIS

Alarm Visualization System

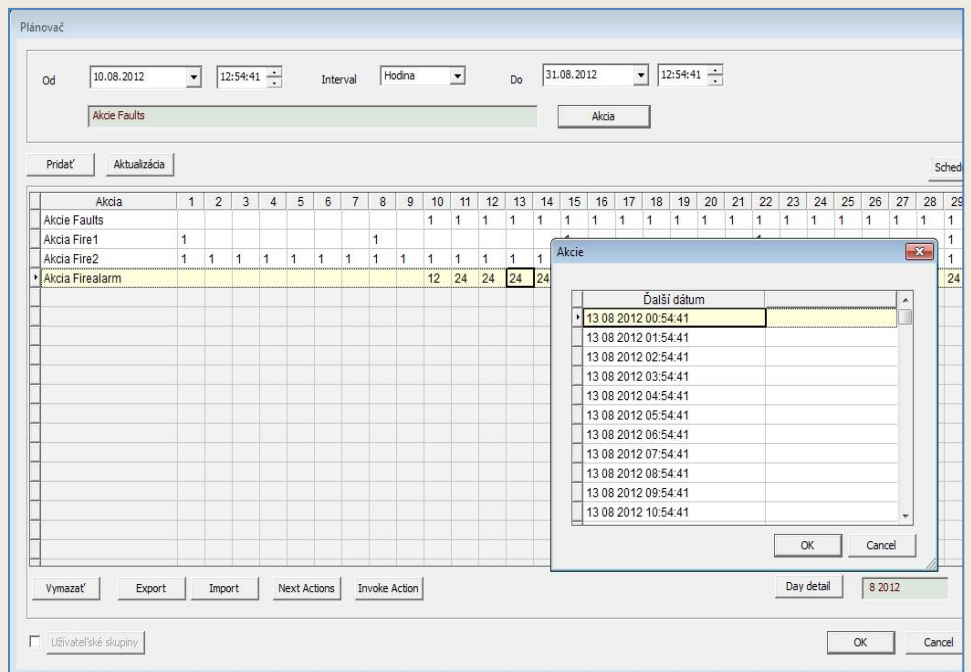
Version 3.6 New Features

WE ARE ON THE TOP

- feature
- innovation
- support
- price

Scheduler new functions

- Detailed calendar of actions
- Invoke immediate action



AVIS WEB 3.6 SERVER NEW FUNCTIONS

- New graphical representation of symbols polygon and polyline to mark the status of some area
- Integration of Pelco video systems
- Configurable symbol blinking
- Improved support for Smartphone mobile devices
- WEB server upgraded to latest version supporting 64bit systems

ALVIS

Alarm Visualization System

Version 3.6 New Features

WE ARE ON THE TOP

- **feature**
- **innovation**
- **support**
- **price**

ALViS WEB 3.6 SMART SERVER

The latest ALVIS WEB V3.6 includes in addition to the previously used Workstation mode the new "SMART" mode dedicated for mobile devices equipped with smaller display. This mode is automatically available by smart_start.php script in any ALViS WEB installation. An example can be seen on

http://abidemo.alvis.sk:81/smart_start.php alternatively using direct login parameters on <http://abidemo.alvis.sk:81/login.php?action=doLogin&name=smart&password=smart&smartMode>

ALViS WEB „Smart mode“ has simplified layout of menu functions and temporary windows to enable a browser usage of the Smartphone equipped by small touch screen (480x800) and OS Android, iOS or Symbian having Java script installed.



In the case, there is no „AJAX, ActiveX or Popup window“support installed in the Smartphone's browser, the usage of the ALViS application will be restricted but still operating.

(See details in the user's manual)